

Networked Product Inspection for Maximum Line Efficiency

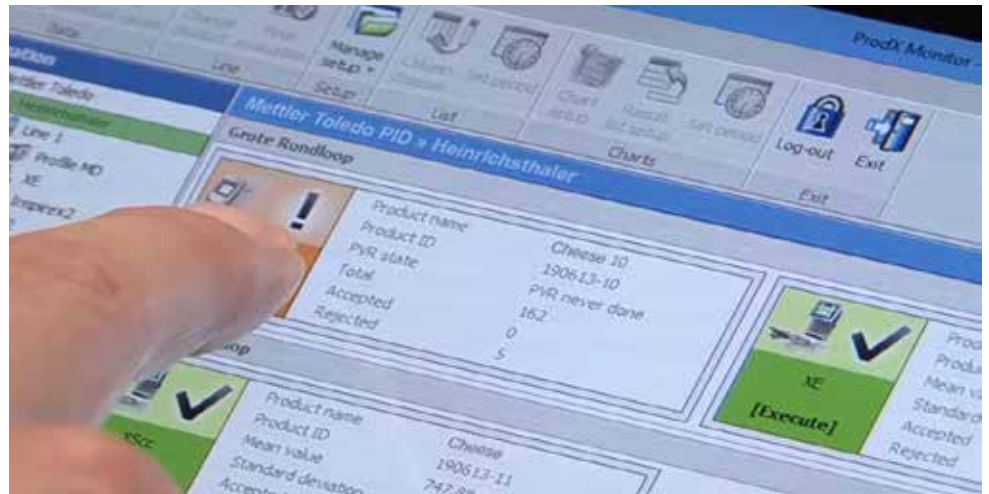


Heinrichsthaler Milchwerke GmbH produces 200 tons of finished dairy products a day on 12 production lines. An integrated HACCP approach facilitates responsible production methods. This is consistently confirmed by the International Food Standard (IFS). With the latest software networking all inspection systems, Heinrichsthaler utilizes its production data to ensure constant traceability of all products at little expense.

Monitoring Across All Lines

In order to remain competitive, Heinrichsthaler constantly optimizes the effectiveness of its production facilities. Five combination checkweigher and metal detector systems have been installed to form critical checkpoints behind the thermoforming and tubular bag machines. Approximately 7000 products per hour can be checked by each inspection system. With up to six product changes required on each line.

With the ProdX Inspect software package, even article settings from remote sites are easily transferred across lines from one checkweigher to another. Production Director Mr. Gründinger explains that the integration of ProdX software was a strategic decision.



Heinrichsthaler

Complete real-time production monitoring

Product waste reduced from 3% to 0.9%

METTLER TOLEDO



Metal detectors are tested five times in every 8-hour production shift.

"By using ProdX, we are in a position to monitor and optimize the mean values of the packaging weights. Real-time proactive data preparation helps us to avoid costly overfilling. We were able to reduce product waste from 3% to only 0.9%, immediately saving 2 grams per package. Meaning, our investment in the inspection management equipment has already paid for itself within three months."

Complete Ongoing Production Monitoring

Cheese production involves three shifts operating seven days per week. Heinrichsthaler relies on the constant availability of all lines, and it counts on ProdX for early warning of potential defects. The software monitors the status of all inspection equipment components and displays key information using color-coded symbols. The production process is transparent, enabling timely implementation of

production flow control measures. Production Director Mr. Gründinger regularly checks the log of the most recent 24-hour period, using trend analysis to detect, for example, whether any weight discrepancies are apparent. All it takes is a glance at the software's PC or tablet screen to know the up-to-date status of current production processes.

"Technical defects with the cutting machine can mean inaccurate completion of final packaging." For problems like these, a proactive approach is essential. "The earlier we identify the defects, the greater the line's availability." Regular monitoring of the metal detector's performance is a fundamental part of the company's internal quality management system. All metal detectors are tested every 90 minutes as well as at the beginning and end of each production shift and when the packaging film or batch is changed. Laminated test cards of different colors are used in the test

packaging alongside test balls of various sizes made from different types of metal. The test results are constantly documented in ProdX so that it's clear at all times whether the inspection systems are working according to the defined specifications.

Passing Audits with Flying Colors

With the inspection systems networked with one another, all production quality data is stored centrally and can be formatted as standard reports according to specific templates. At Heinrichsthaler, Mr. Gründinger also carries out periodic data analysis at hourly intervals. "I check to see how many packages have gone through per hour and with what average weight. This means I can see what the current shift is producing and whether the employees have everything under control. I even check data on all system alerts and rejected products in addition to the regular metal detector performance test results. Lastly, we ensure all the data is logged and completed so it can be submitted to the weights and measures authorities or the IFS certification office."

Heinrichsthaler is able to visualize all key information at any time in a condensed graphic format, ensuring a successful audit.

Further Information:

► www.mt.com/prodx

Mettler-Toledo GmbH

CH-8606 Greifensee, Switzerland
Tel: +41-44-944 22 11
Email: product.inspection@mt.com
Website: www.mt.com/contact

Subject to technical changes.
©09/2016 Mettler-Toledo GmbH